



NOMATEC®

ROOF SEAL

NOMATEC® Roof Seal are self adhesive profiles with open cell PE foam specially designed to seal the roof area. Thanks to their unique cut profile, they adapt themselves to nearly every roof shape and reliably fill gaps and fugues.

FOAM:

- « Non cross-linked PE-LD
- « Open cells with skin
- « Colour: grey
- « Density $27 \text{ kg/m}^3 \pm 3 \text{ kg/m}^3$
- « Storage conditions: not exposed to UV

GLUE:

- « Hotmelt PSA
- « Colour: transparent / yellow
- « Recommended application temperature: $> 5^\circ\text{C}$
- « Usage temperature: $5 - 50^\circ\text{C}$

www.nmc-nomafoam.com

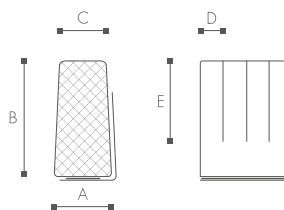
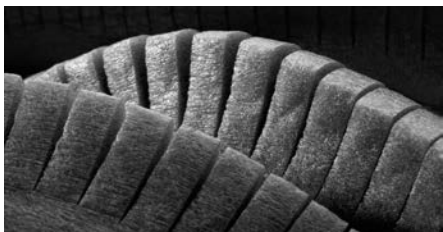


NMC reserves the right to update the product line or its technical features to the state-of-the-art technology anytime and without previous announcement. All given information is to the best of our knowledge. If you have any questions concerning technical details please contact the NMC information service. Any partial reproduction or reprint shall require our explicit approval.



NOMATEC® Roof Seal

NOMATEC® Roof Seal



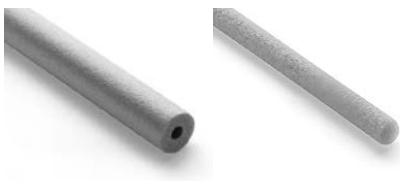
COLOUR	Grey
PACKAGING	length on coil
COILS ON PALLET	4
FEATURES	<ul style="list-style-type: none"> ■ Seals gaps in the roof area ■ Flexible, preslit profile ■ Self-adhesive ■ Available in 40 and 50mm height (B) ■ Storage conditions: free from UV, dry and dust free, at temperature between 5 and 35°C

Type	A	B	C	D	E	Packaging unit	Length	Item Code
	mm	mm	mm	mm	mm	m/coil	m	
25 x 40	25 ±2	40 ±2,5	20 ±2	10 ±1	25 ±2	350	350 ±2%	3006528
25 x 50	25 ±2	50 ±2,5	18 ±2	10 ±1	25 ±2	300	300 ±2%	3006530

m³/☺ = 0,70 ☺ 1200x460mm

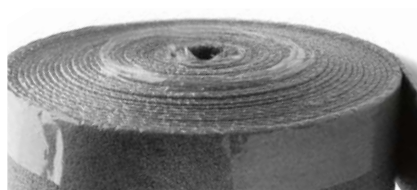
Also in our range

NOMATEC® Backer Rod Hollow & Full



NOMATEC® Backer Rod Hollow & Full round profiles are manufactured from closed-cell polyethylene foam and are used as backing material for elastomeric and other cold-applied sealants. They are inserted into a joint to control the sealant depth and act as bond-breakers, without adhering to the sealant.

NOMATEC® RDS



NOMATEC® RDS are edge insulation and expansion joints, in closed cell PE foam, for cement floor and floor heating systems.

www.nmc-nomafoam.com

For further information, please contact the respective subsidiary in your country.

Visit www.nmc-nomafoam.com

